

ACCESSORIES

SMB-1G, SMB-2G, SMB-3G, SMB-4G
SMB-1W, SMB-2W, SMB-3W, SMB-4W
Surface Mount Boxes
 (G-Gray, W-White)

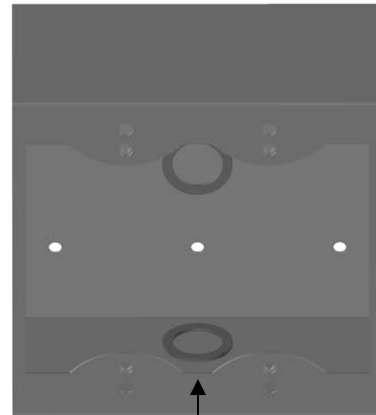
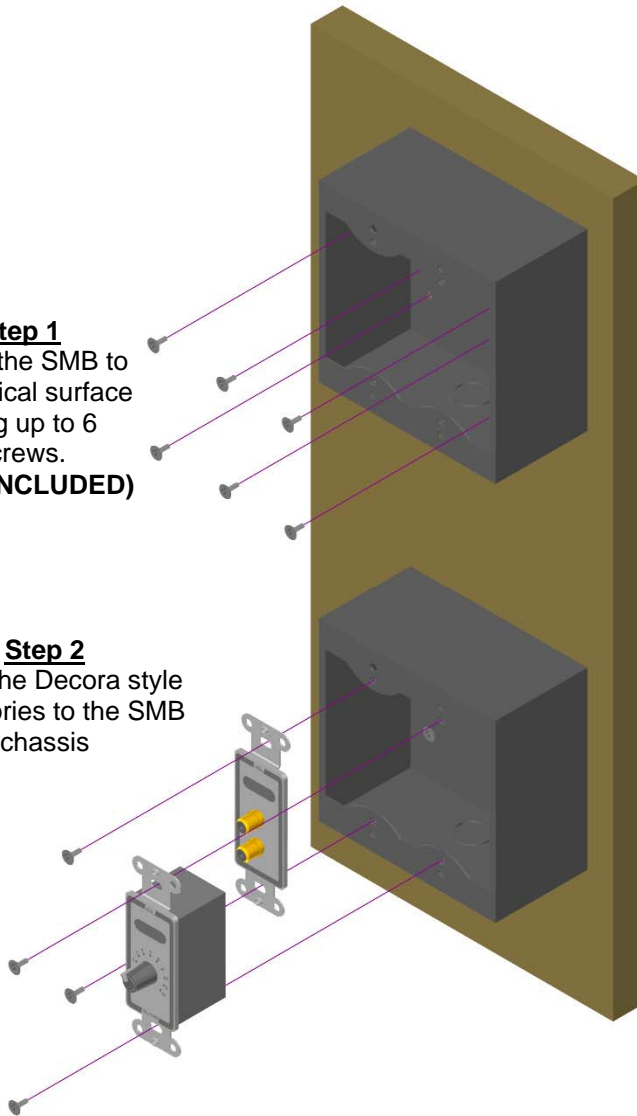
Installation/Operation

CE EN55103-1 E1-E5; EN55103-2 E1-E4
 Typical Performance reflects product at publication time
 exclusive of EMC data, if any, supplied with product.
 Specifications are subject to change without notice.

The SMB-1, 2, 3 and 4 surface mount boxes hold one, two, three or four Decora®-style products, including RDL remote controls and connector plates.

Step 1
 Attach the SMB to the vertical surface using up to 6 screws.
(NOT INCLUDED)

Step 2
 Attach the Decora style accessories to the SMB chassis



If using conduit, the SMB may be mounted with the knockout facing up or down. The small knockouts fit metric conduits; the larger knockouts fit US conduit.