

Pin & Sleeve Devices

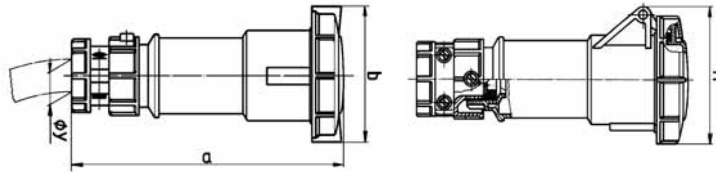
Series 309 Watertight 20A Connectors & Inlets



0-2 Pin & Sleeve

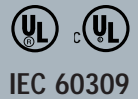
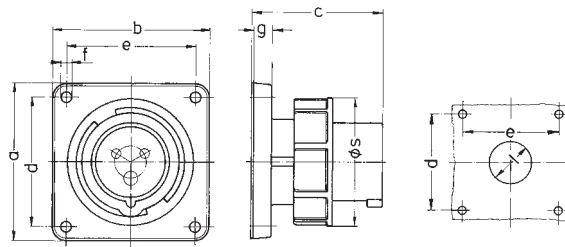
20A Watertight Connectors

Catalog No.	Configuration	Voltage	Connector Dimensions in Inches (CM)				
			a	b	h	y (Cord Diameter)	Threaded Entry (NPT)
2P3W							
CD320C4W		125V					
CD320C6W		250V	6.85 (17.40)	2.84 (7.21)	3.11 (7.90)	0.36-0.76 (0.91-1.93)	3/4 (1.91)
CD320C7W		480V					
3P4W							
CD420C12W		125/250V					
CD420C9W		3Ø250V	7.28 (18.49)	3.11 (7.90)	3.47 (8.81)	0.36-0.76 (0.91-1.93)	3/4 (1.91)
CD420C7W		3Ø480V					
CD420C5W		3Ø600V					
4P5W							
CD520C9W		120/208V 3ØY					
CD520C7W		277/480V 3ØY	7.92 (20.12)	3.47 (8.81)	3.74 (9.50)	0.45-0.94 (1.14-2.39)	1 (2.54)
CD520C5W		347/600V 3ØY					



20A Watertight Inlets

Catalog No.	Configuration	Voltage	Inlet Dimensions in Inches (CM)								
			a	b	c	d	e	f	g	l	s
2P3W											
CD320B4W		125V									
CD320B6W		250V	3.37 (8.56)	3.37 (8.56)	2.76 (7.01)	2.74 (6.96)	2.74 (6.96)	0.22 (0.56)	0.43 (1.09)	1.26 (3.18)	2.80 (7.11)
CD320B7W		480V									
3P4W											
CD420B12W		125/250V									
CD420B9W		3Ø250V	3.37 (8.56)	3.37 (8.56)	2.76 (7.01)	2.74 (6.96)	2.74 (6.96)	0.22 (0.56)	0.43 (1.09)	1.26 (3.18)	3.11 (7.90)
CD420B7W		3Ø480V									
CD420B5W		3Ø600V									
4P5W											
CD520B9W		120/208V 3ØY									
CD520B7W		277/480V 3ØY	3.37 (8.56)	3.37 (8.56)	2.76 (7.01)	2.74 (6.96)	2.74 (6.96)	0.22 (0.56)	0.43 (1.09)	1.85 (4.70)	3.50 (8.89)
CD520B5W		347/600V 3ØY									



TESTING & CODE COMPLIANCE

- IEC 60309-1 and 60309-2.
- IP67 per IEC529.
- UL 498, 1682 and 1686.
- CSA C22.2, 182.1.

MATERIAL CHARACTERISTICS
 Environmental:
 Flame rating per UL 94: housings V2, contact carriers V0.